



Lake Effect
GARDEN & DESIGN

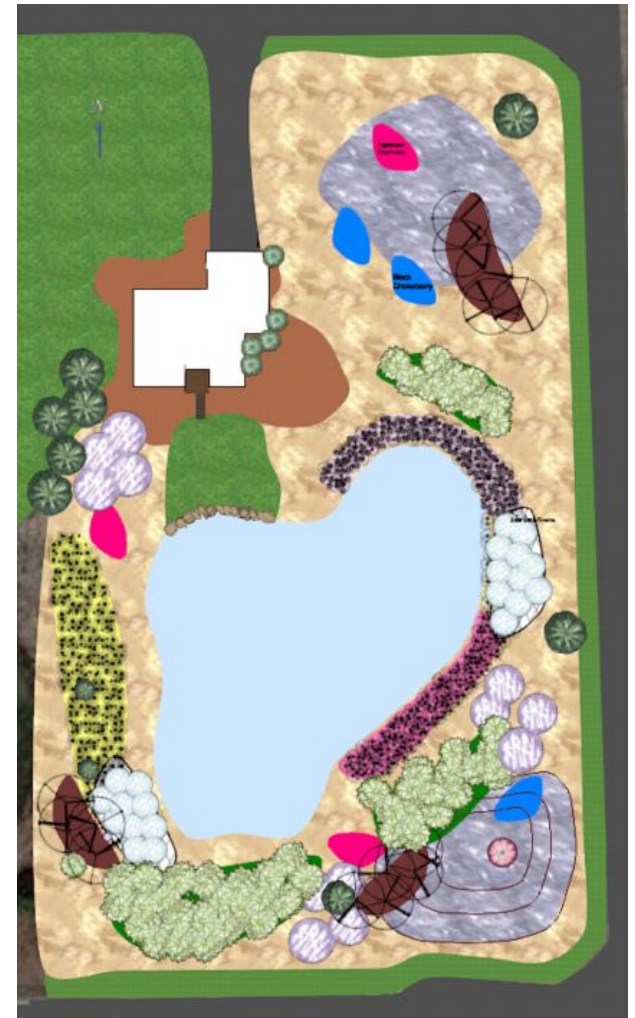
Dickinson Property

11628 Horseshoe Ct, Grand Haven, Michigan

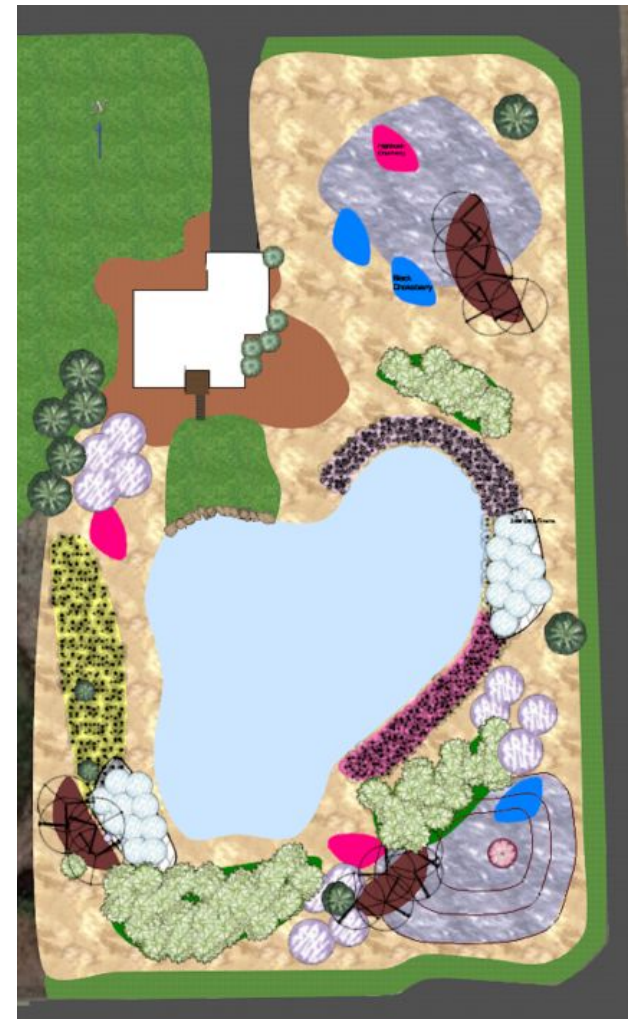
June 2, 2023

Project Timeline

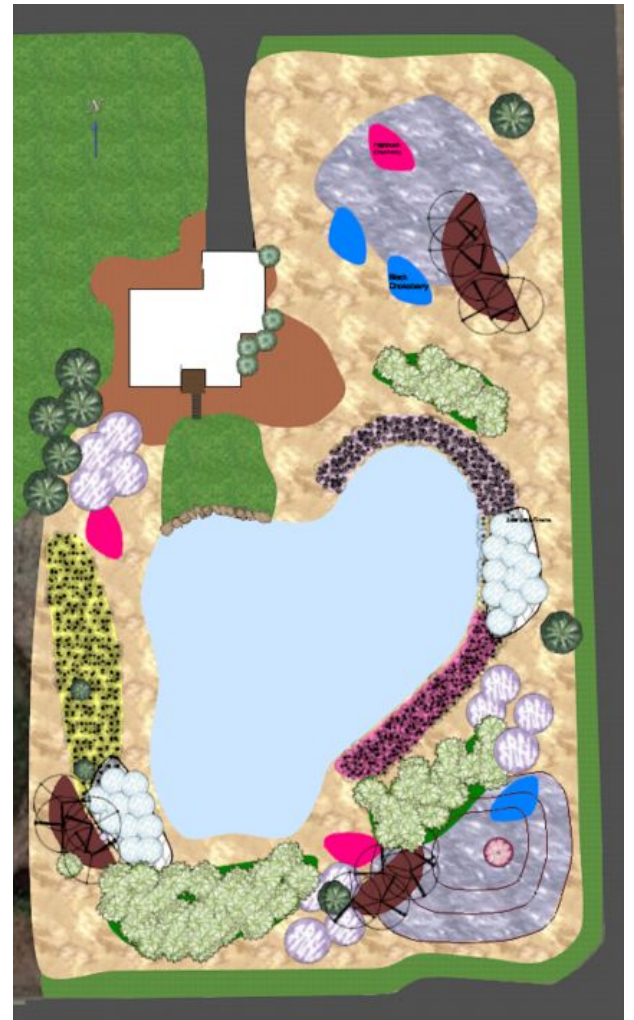
Task	Date
<i>Provide landscape design and begin estimates for the work</i>	<i>May /June 2023</i>
<i>Kill off the Knapweed around the pond after flowering</i>	<i>June 2023</i>
<i>Start treating the phragmites</i>	<i>August 2023</i>
<i>If your are cutting down the phragmites, please stop until we can treat them as we need more vegetation on them to absorb the insecticide</i>	<i>test</i>
<i>Begin elimination of the lawn, at least 2 applications</i>	<i>August 2023</i>
<i>Remove any trees and shrubs not part of the final plan</i>	<i>August 2023</i>
<i>We do recommend removing the ornamental pears on the far side of the pond</i>	
<i>Grade the entire site in preparation for seeding</i>	<i>September 2023</i>
<i>Build stone pond edge - add soil, raise grade near pond edge</i>	<i>September 2023</i>



Plant bare root trees and shrubs	November 2023
<i>This will likely spill into the spring of 2024 depending on inventory /budget</i>	
Plant balled and burlapped trees	November 2023
<i>This will likely spill into the spring of 2024 depending on inventory /budget</i>	
Broadcast the seed for the Meadow	November 2023
Plant Native Plugs around the Pond	November 2023
Plant native plugs /shrubs in existing beds next to the house	August /September 2023
<i>This will likely spill into the spring of 2024 depending on inventory /budget</i>	
Redesign of Back Deck Area and plantings adjacent to the house	Spring 2024 +
Cutting and spraying any invasive plants that emerge in the meadow	Summer 2024
Plant Native Plugs into Property Corners	Fall 2024
Spot cutting and spraying any invasive plants that emerge in the meadow	Summer 2025
<i>*Irrigation during establishment period</i>	
<i>Bare root trees and shrubs planted in fall will not need irrigation</i>	
<i>Balled and burlapped or up to #3 trees (white pins) will need some irrigation</i>	
<i>Discontinue irrigation for all trees and shrubs by the end of the year</i>	



Meadow Plants





Purple Coneflower



Rattlesnake
Master



Showy Goldenrod



Rough Blazing
Star



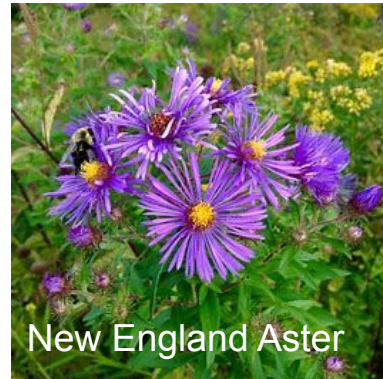
Common Milkweed



Baptisia



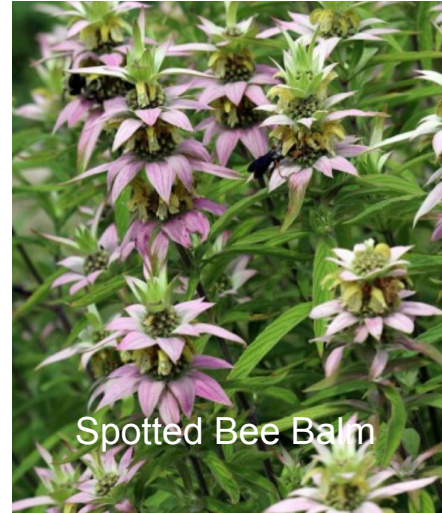
Amsonia



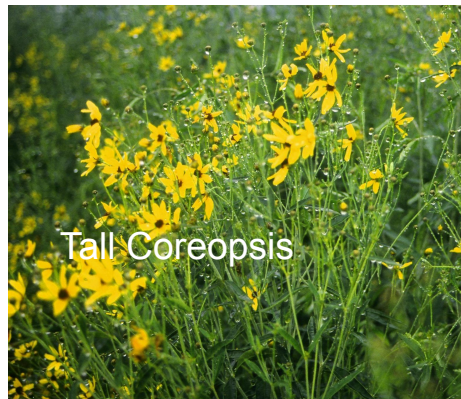
New England Aster



Common Boneset



Taller Forbs



Tall Coreopsis



Culver's Root



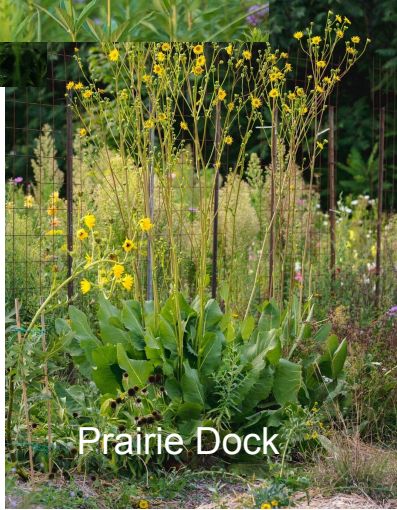
Ironweed



Rosinweed



Yellow Coneflower



Prairie Dock



Cup Plant





Shorter Primary Meadow Grasses



Sideoats Grama

Little Bluestem

Taller Primary Meadow Grasses



Big Bluestem

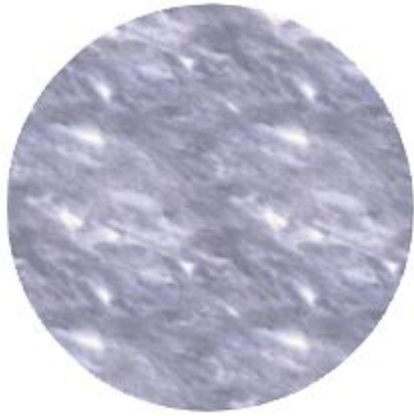


Indian Grass



Switchgrass

Property Corners





Purple Coneflower



Yellow
Coneflower



Little
Bluestem



Baptisia



Liatris Aspera



Butterfly Weed

Pond Edges





Swamp Rose Mallow



Swamp Milkweed





Wool Grass



Blue Flag Iris



Spotted Joe Pye
Weed



Common Boneset

Carex and Sedges for pond transition zones

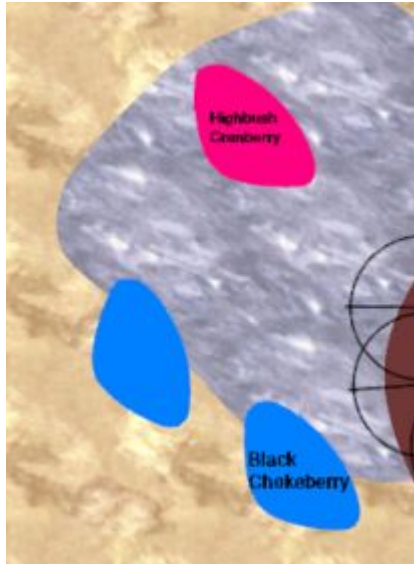


Carex grayi



Fringed Sedge

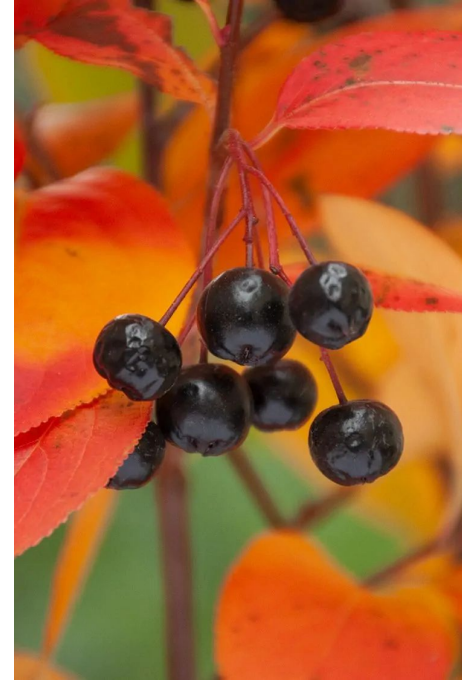
Shrubs



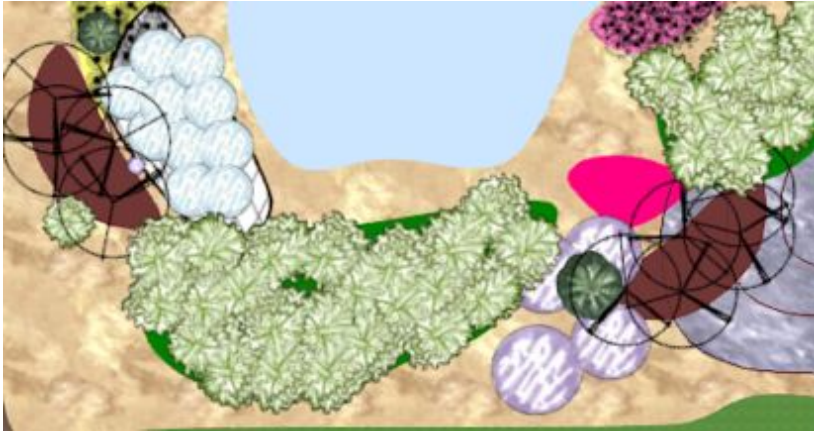
Scattered massings of Highbush Cranberry



Scattered massings of Black Chokeberry



Trees





Eastern White Pine

River Birch



Redbud



Sumac



Sumac

